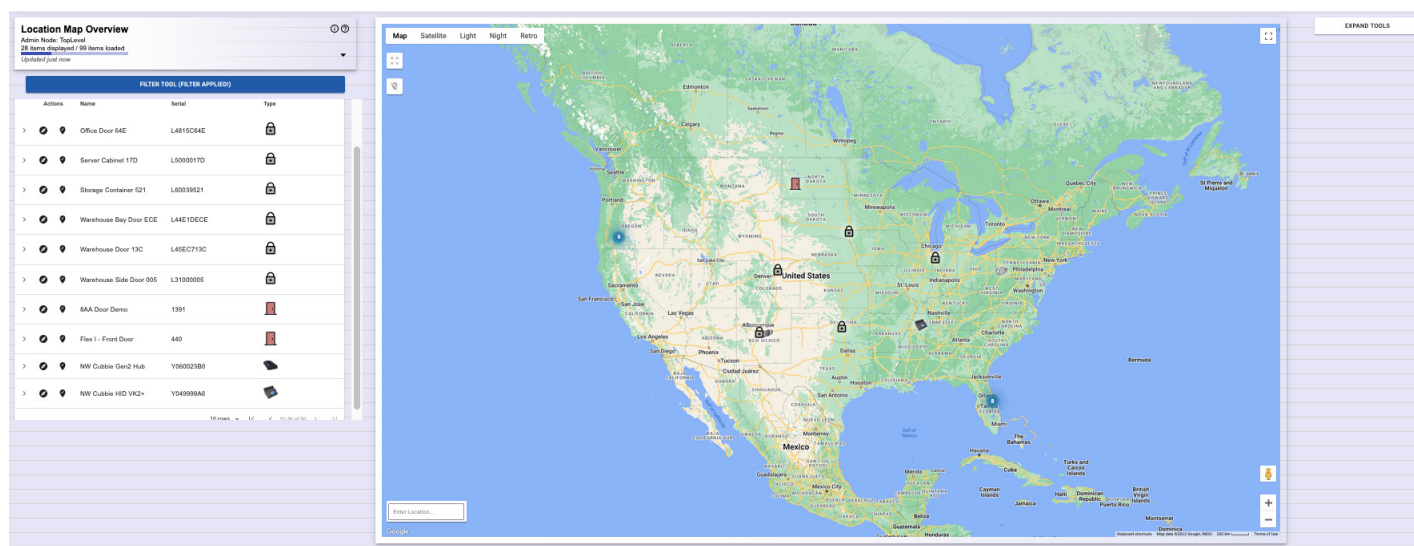


Overview

Location Map is a powerful application that allows management and visualization of CyberAudit-Web data with an augmented map.

Location Map is integrated within CyberAudit-Web and available with the Maps and Location Graphics Software Enhancement Module.



Benefits of Location Map

Visualize and display items on a map

- Bring CyberAudit-Web to life by augmenting data on a powerful geospatial map.
- Understand surrounding environments (e.g., available transportation, parking facilities, etc.).
- View item location distributions across the world as aggregated cluster counts.

Make better business decisions

- Gain insight and information from geospatial data to help your business succeed.

Improve transparency in employee engagement

- Using the Audit Trail tool, add an additional level of confidence by presenting a user's events as they occurred in a step-by-step timeline.
- Discover trends and patterns that can make workflows more effective.



Find relevant items easily

- Process and present information relevant to workflow with the powerful Filter Tool.

Improve onboarding and training

- Empower new users to learn and interact with the system efficiently.

Capture and export geo-coordinates for Geographic Information Systems (GIS)

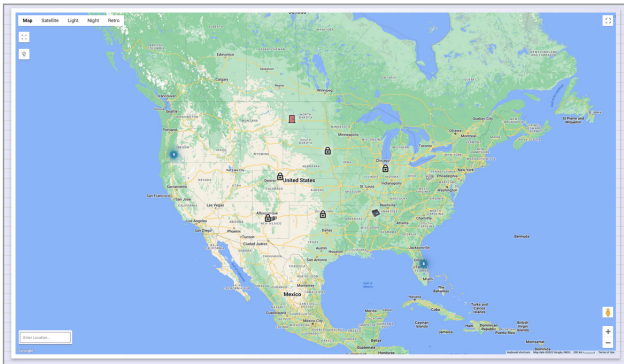
- Create a layer of locks, doors, and communicators for GIS and other mapping services.

Answer questions such as:

- *Where is this item located?*
- *Are there any facilities nearby?*
- *What does the building look like?*
- *How do I get there?*
- *What other items are nearby?*
- *How are users interacting with the item?*
- *Where should new items be installed?*



Map



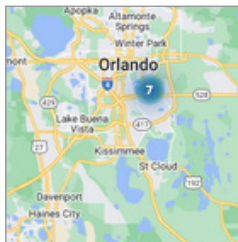
Map

Items visible to your account are rendered on this map. On the first page load, the application will dynamically calculate the needed viewport to display all items in the system.



Markers

Items are displayed on the map with markers. Hover and interact with items by clicking on them. When clicking on an item, it will automatically be selected in the Items Table. Different item types have different icons.



Clusters

In order to improve performance, nearby items are merged into a single item for certain zoom levels. The number value in the middle of the cluster indicates the number of items being merged. As the zoom level is changed, clusters on the map will update accordingly.

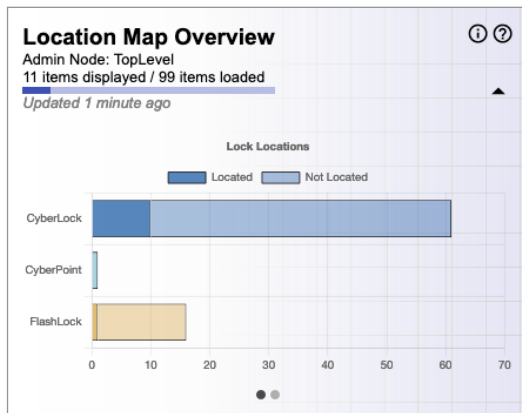


Map Styles

The map style can be changed by clicking one of the options on the side.



Overview Tool



Overview Tool

The Overview Tool displays data charts and information about how many items are displayed on the map and are in the system.

Data changes dynamically as filters are applied to the displayed items.

Locator Tool

Click on a point on the map to modify this item's location.

Locating for:

Bluetooth Padlock D25

Latitude

44.5899910169211

Longitude

-123.24023182688506

CLOSE

SAVE CHANGES

Locator Tool

The Locator Tool is used to modify an item's location. Open using the 'Edit Item' action in the Items Table.

The existing latitude and longitude values are displayed when it is first opened. If the item does not have a location, these values are set to 0.

By clicking a point on the map, the latitude and longitude input values are modified. Click 'Save Changes' and the item's location will be saved. The map will then automatically refresh.

Flex I - Front Door

Serial: 440
Type: Door
Personnel ID: 440
Plus Code: 85VV3F99+9X

Tags:



Properties Audit Trail Show in Matrix Monitor Request To Open
People with Access Notification Journal Notebook

Display Panel

An item's display panel can be opened by clicking on the '>' icon or by clicking on the row. The Display Panel will have additional details for the item, including tags and the user-editable photo (if applicable).

Additionally, item actions are found here, such as 'Properties' and 'Audit Trail'. Item actions are different for every item type and some are only displayed if the user has permissions for that action.

Item actions will open up a popup window. In some cases, such as 'Properties' or 'Caching', the popup window will close automatically and the Location Map will refresh.

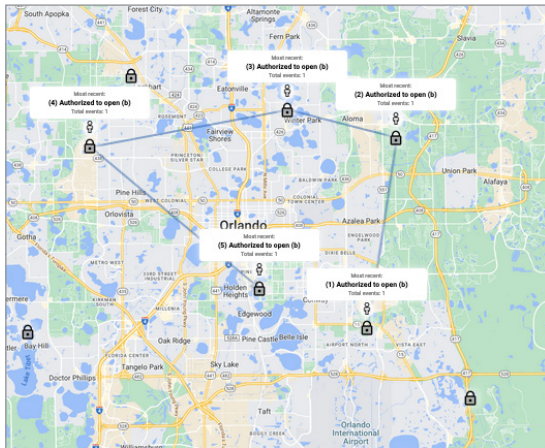


Access Table

Access			
VIEW TAGS			
Actions	Name	Personnel ID	Access
>	Abby Johnson	008	
>	Adam Evening	8600	
>	Alan Pham	690278601	
>	Alex Brown	128	
>	Andy Nelson	6902	
5 rows 1/5 of 54			

Access Table

The Access Table allows interaction with the map using data from people and people tags.



Audit Trail Tool

The Audit Trail Tool is used to review a given person's recorded events for a user-defined date span.

Selecting the 'Audit Recent Events' action on a person's row will open up the tool. Each event is displayed in a chronological timeline.

Selecting an event on the timeline will refocus and navigate the map to the event's associated item. Additional details about the event are also provided.

The date span and maximum number of events to retrieve can be configured in the Settings tool.