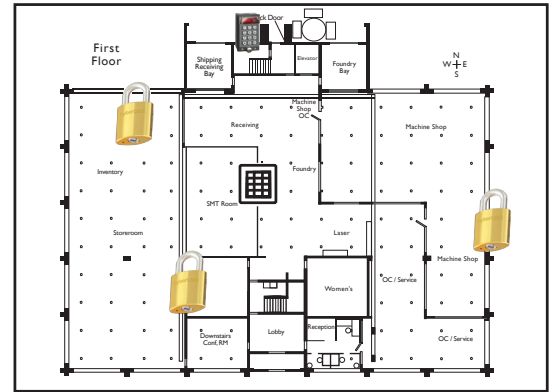


Software Enhancement Modules (SEMs) unlock advanced features within CyberAudit® software that provide specific functionality. Each SEM can be purchased individually, enabling CyberAudit customers to pay for only the features they need.

Available SEMs include:

Enterprise Location Graphics Module (CAW-M01)

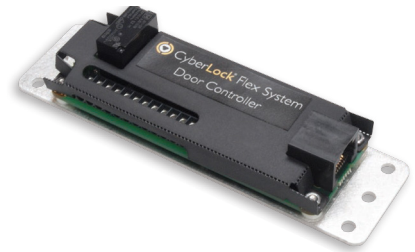
The Location Graphics Module opens a visual interface tool that allows CyberLocks and Communicators to be graphically “placed” on drawings, pictures, or maps (JPEG, PNG, or TIFF compatible). In particular, this module helps large and geographically spread-out CyberLock deployments to improve tracking and locating of locks and communicators.



Professional Door & I/O Support Module (CAP-M01)

Enterprise Door & I/O Support Module (CAW-M02)

The Door & I/O software Module adds software features required to manage all the functionality the Door & I/O hardware Module brings to a Flex System installation. In addition to managing individual access rights to each door, Request-to-Exit (RTE) events are recorded, doors can be set to automatically unlock and relock at specified times, door sensors are monitored, and alarms can be triggered if a door is forced or left open after a specified amount of time.



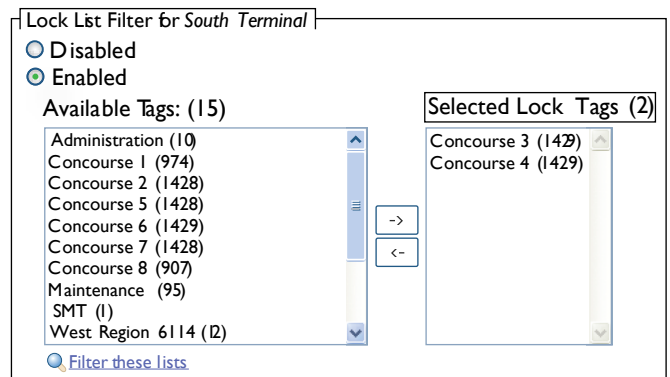
Enterprise Key Security Enhancement Pack Module (CAW-M03)

The Key Security Enhancement Pack includes three security features. The first is an option that makes the first key of a multi-key operation the sole key able to open a CyberLock within a sixteen-second window. The second adds a Temporary Activation option that enables activating an expired CyberKey® for five minutes by touching a selected CyberLock or CyberPoint® on legacy Cyberkeys G2. A Cyberkey can support temporary activation times between 2 min and 72 hours. The third feature provides an option to limit temporary activation and one-time use settings on legacy CyberKeys to an 8-second window.



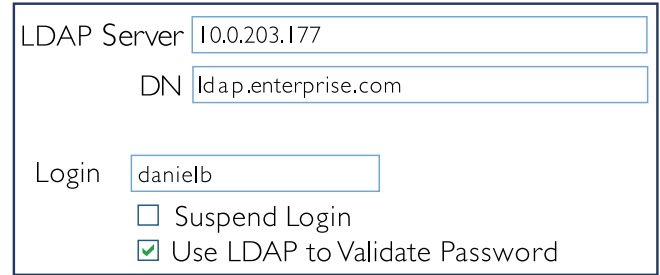
Enterprise Lock List Filtering (CAW-M04)

The Lock List Filtering Module enables limiting the number of locks loaded into Keys on a per communicator basis. This is needed when a legacy CyberKey requires individual permission to more than the maximum 3300 lock capacity. With this enhancement, keys and missions may effectively be granted access to an unlimited number of individual Locks with each communicator in the system filtering the locks to selected tags. The Lock List Filtering Module is required to enable the improved 12,000 lock capacity in G2 CyberKeys.



Enterprise LDAP Authentication Module (CAW-M05)

The LDAP Authentication Module enables basic LDAP authentication for selected administrator logins. When enabled, CyberAudit can optionally validate the administrator's login and password against the LDAP server, rather than locally from within CyberAudit Software. CyberAudit supports the LDAP method of sending the user name and password to the LDAP server via SSL on port 636. It does not support proxies or port forwarding to establish the LDAP connection. It is not designed for use with hosting systems.

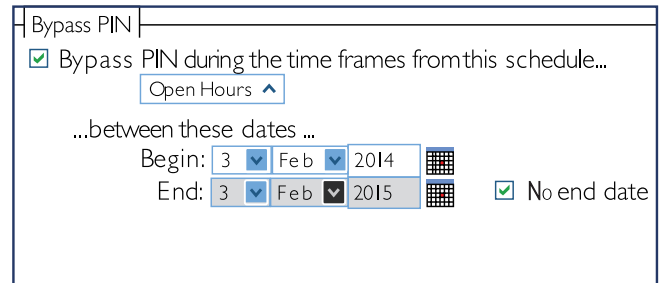


LDAP Server: 10.0.203.177
 DN: ldap.enterprise.com
 Login: danielb
 Suspend Login
 Use LDAP to Validate Password

Advanced Door Features Module (CAW-M06)

The Advanced Door Features Module adds 3 features for use with doors:

- A No PIN required schedule - During this time, a person with a PIN will not be required to enter their PIN to gain access to the door. This is useful in cases where a PIN is not required during normal business hours, but would be required at all of the other times.
- Keep Unlocked Calendar entries - Allows scheduling time windows during which a specified door will be held unlocked. CyberAudit-Web software adds the time frame of the calendar entry to the door's Keep Unlocked Calendar schedule in the week of the calendar entry. This feature is useful for facilities that schedule events on a calendar basis and want specified doors to be held unlocked for those events.
- A door monitor window - Display door activities in a scrolling window as they occur.



Bypass PIN
 Bypass PIN during the time frames from this schedule...
 Open Hours ^
 ...between these dates ...
 Begin: 3 Feb 2014
 End: 3 Feb 2015 No end date

Rolling Access Codes Module (CAW-M08)

Automates the process of changing lock access codes for some or all CyberLock cylinders in a system. Access codes may be configured to change (roll) on a periodic basis. A "grace period" may be designated during which the lock will continue to honor the old access codes to complete the change for all affected locks.