

CyberLocks

With time, dirt or residue may accumulate on the face of a CyberLock. If foreign material builds up where a CyberKey makes contact with the lock, it may cause intermittent performance. Lack of good contact between key and lock is indicated when an authorized key (with a good battery) contacts a lock and one of the following occurs:

- the light on the key does not turn on
- the light comes on but the solenoid does not fire
- the solenoid does not hold open after firing

CyberLocks manufactured since the start of 2005 have a stainless steel contact area, like the images on the right. Please contact CyberLock Technical Support for instructions on cleaning older styles of CyberLock.

Cleaning Instructions:

- Use part number BRUSH (stainless steel brush) to scrub the nose and contact points in small circular motions for 10-20 seconds.
- Rub the face using a cotton swab with a small amount of denatured alcohol for 10-20 seconds. Replace the swab as it becomes dirty.
- Dry remaining alcohol from the face with short bursts of compressed air.
- If more aggressive cleaning is needed, use BRUSH-D with a low speed drill to clean and polish the nose and contact points for 10-20 seconds. Follow up with denatured alcohol on a cotton swab.
- When finished, the lock face should be clean as in Figure 2.
- Test with a clean key to verify reliable electrical contact.

Warnings:

- Never scrape the contacts with a sharp tool; this may cause damage.
- When cleaning a CyberLock, DO NOT use sprays or lubricants.
- Do not use petroleum based products or WD-40.

CyberKeys

Cleaning Instructions:

- Remove foreign material like lint or dirt with a toothpick or small tool.
- Retract the BRUSH, place on a contact pin, and twist until pin is bright and shiny. Repeat the process on the other two pins.
- Use a cotton swab to rub the pins with a small amount of denatured alcohol to thoroughly remove contaminants and debris, typically 10-20 seconds. Replace the swab if it becomes dirty.
- Dry remaining alcohol from pins with short bursts of compressed air.
- Test with a clean lock to verify reliable electrical contact.

Warning: Do not use cleaners or other liquids when cleaning a CyberKey.

If these procedures fail to provide satisfactory results, please contact CyberLock Technical Support.

CyberLock, Inc.

1105 N.E. Circle Blvd., Corvallis, OR 97330

541-738-5500 • Fax 541-738-5501 • www.cyberlock.com • sales@cyberlock.com • support@cyberlock.com

CyberLock and CyberKey are registered trademarks of Videx, Inc



Figure 1 - Dirty Lock Face

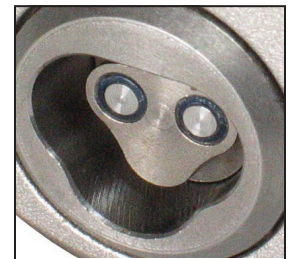


Figure 2 - Clean Lock Face



Figure 3 - Place retracted BRUSH on pins and twist



Figure 4 - Clean pins